

2. Faculty

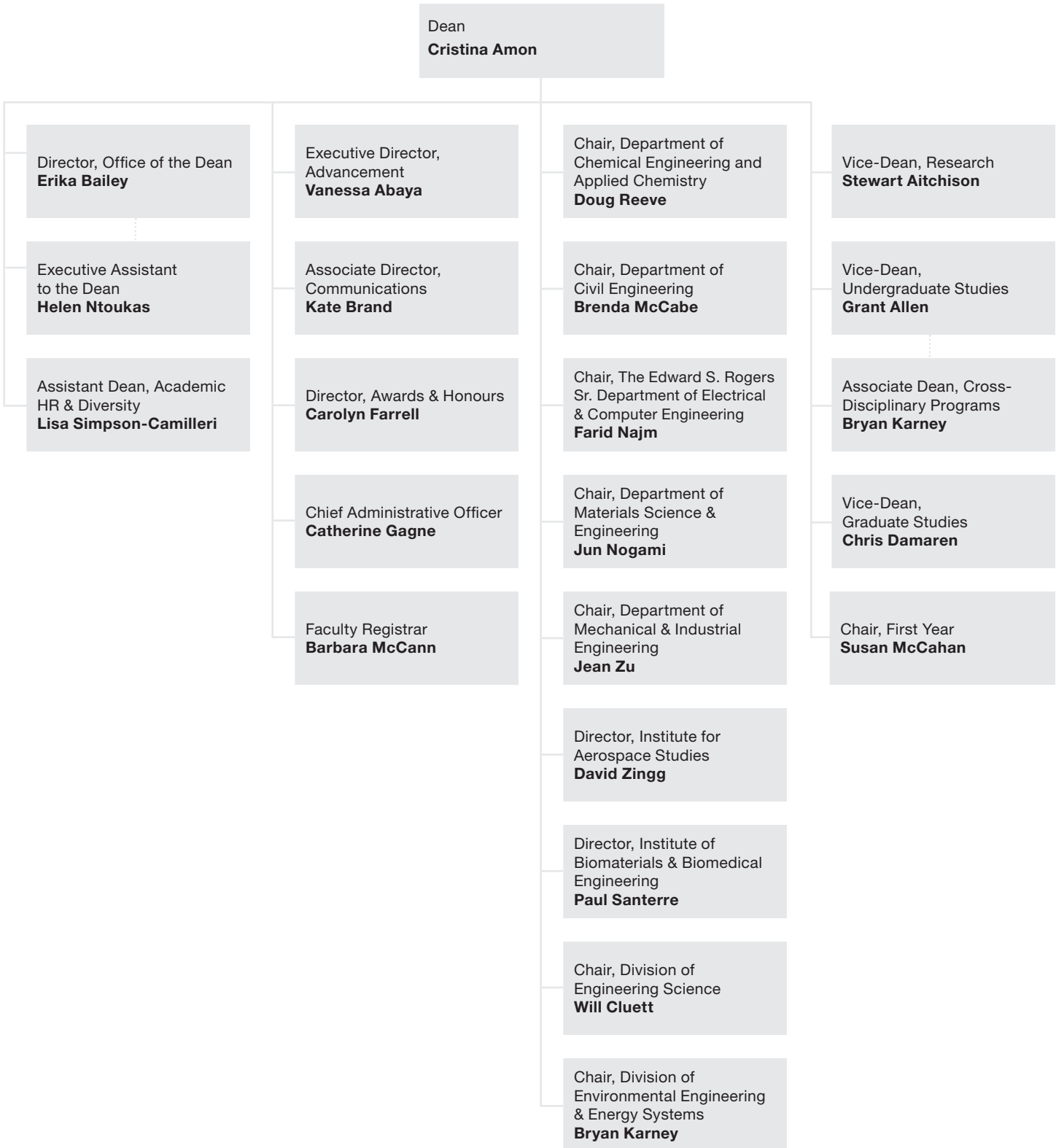
Over the past 10 years the Faculty of Applied Science and Engineering has grown and evolved tremendously. In 1999, the Faculty comprised 182 academic staff – today, the Faculty is home to 230. In the last two years alone, 25 new scholars have joined our community. To learn more about faculty appointments, please visit:

www.eneews.engineering.utoronto.ca/sept3/facultyappointments.html

The Faculty's leadership team also continues to evolve. In 2008–2009, three new Chairs were appointed, the Chair of First Year was re-appointed to a second three-year term, and the positions of Assistant Dean, Academic HR & Diversity, and Associate Dean, Cross-Disciplinary Programs Office were created.

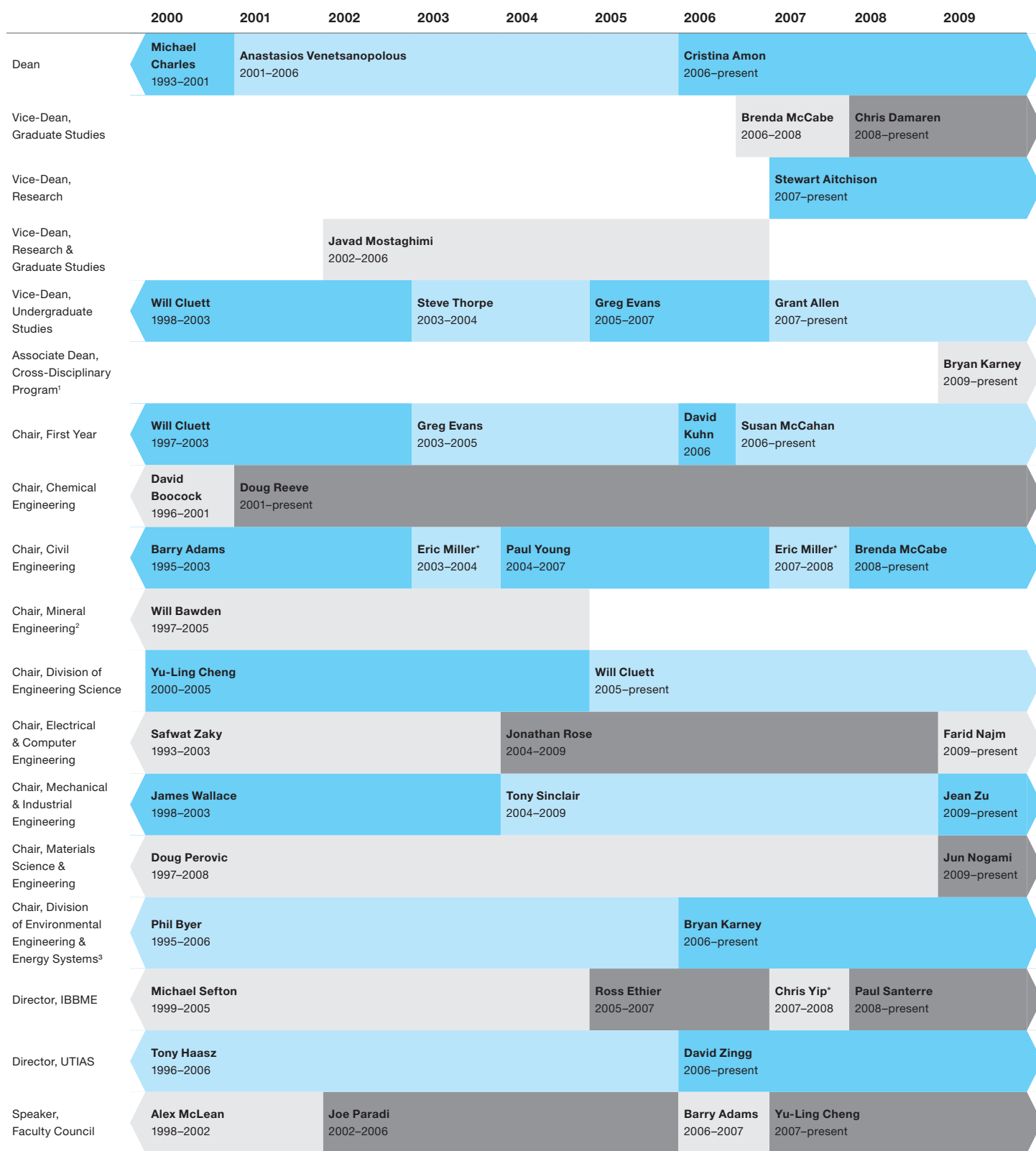
Our Faculty is the strongest in Canada and among the best in the world. Successes in international awards and honours, in competitions for research funding, and in technology transfer are highlighted in the coming chapters.

Figure 2.1
Faculty Organizational Chart
2008–2009



Note: In 2008–2009 new Chairs were appointed in ECE, MSE and MIE, the Director of IBBME was appointed in September 2008, and the Chair, First Year was reappointed to a second three-year term. Two positions were redefined in the decanal portfolio in 2008–2009, including the Associate Dean, Cross-Disciplinary Programs, and the Assistant Dean, Academic HR & Diversity. In the past three years, two administrative positions were added, including the Associate Director, Communications and Director, Awards & Honours. In 2009, we partnered with the U of T School of Continuing Studies to deliver our Professional Development Centre (PDC) courses.

Figure 2.2
Academic Administrative Faculty Roles
2000–2009



Note: (1) Associate Dean, Cross-Disciplinary Programs is a position created in 2009. (2) Merged with Civil Engineering in 2005. (3) Formerly the Division of Environmental Engineering, 1995 to 2005. (*) Indicates Interim Position.

Figure 2.3a
Total Academic Staff by Academic Area
1999–2000 to 2008–2009

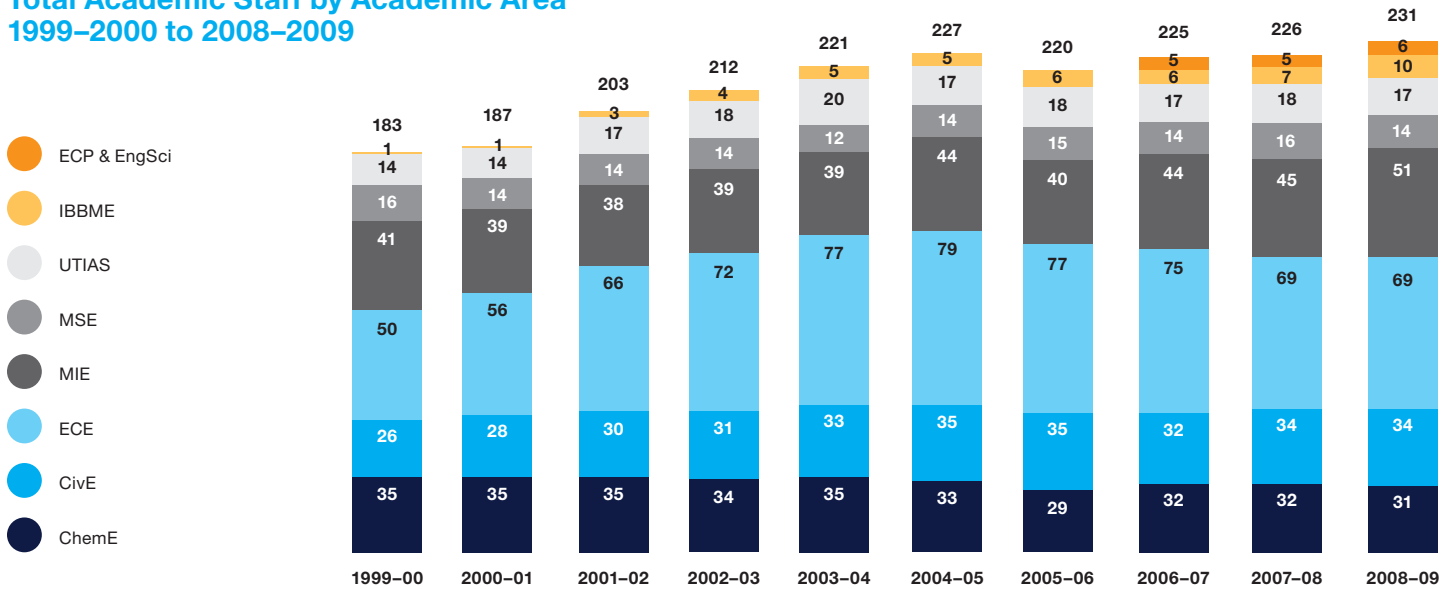
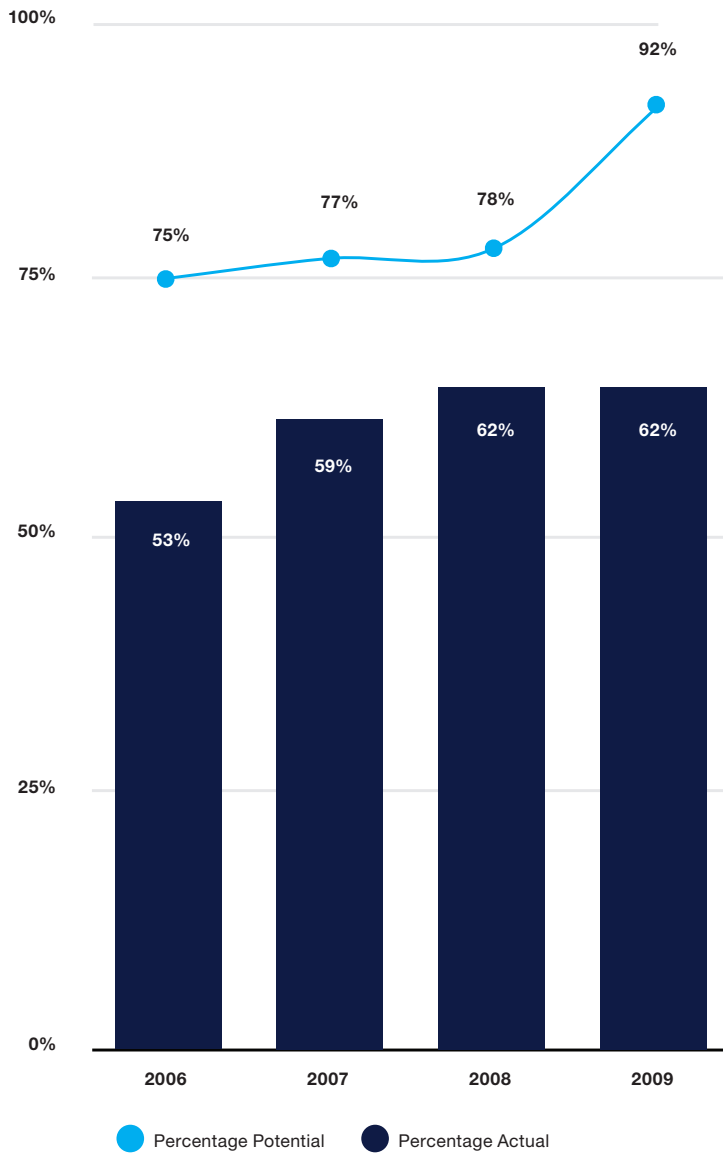


Figure 2.3b
Total Academic Staff by Academic Area and Position
1999–2000 to 2008–2009

		1999–00	2000–01	2001–02	2002–03	2003–04	2004–05	2005–06	2006–07	2007–08	2008–09
ChemE	Assistant Prof	5	5	4	2	1	1	2	4	5	5
	Associate Prof	7	7	5	5	6	6	2	3	3	3
	Professors	19	19	22	23	24	22	22	22	20	17
	Lecturers	4	4	4	4	4	4	3	3	4	6
CivE	Assistant Prof	5	6	9	9	9	8	7	11	8	6
	Associate Prof	6	7	6	5	7	9	9	6	10	12
	Professors	15	15	15	17	17	18	19	15	15	15
	Lecturers	0	0	0	0	0	0	0	0	1	1
ECE	Assistant Prof	9	15	23	27	30	35	28	25	18	10
	Associate Prof	11	10	5	4	9	9	14	15	22	25
	Professors	27	28	35	37	35	32	30	30	25	30
	Lecturers	3	3	3	4	3	3	5	5	4	4
MIE	Assistant Prof	7	7	5	5	6	10	10	13	14	13
	Associate Prof	9	8	6	7	7	7	5	6	7	8
	Professors	25	24	27	27	26	26	24	24	23	26
	Lecturers	0	0	0	0	0	1	1	1	1	3
MSE	Assistant Prof	0	0	0	0	0	1	1	1	2	2
	Associate Prof	5	3	3	3	3	3	4	4	4	2
	Professors	11	11	11	11	9	10	10	9	10	10
	Lecturers	0	0	0	0	0	0	0	0	0	0
UTIAS	Assistant Prof	1	1	2	2	5	4	4	4	4	4
	Associate Prof	0	0	1	1	1	1	1	1	3	5
	Professors	12	12	12	13	12	10	10	10	9	6
	Lecturers	1	1	2	2	2	2	3	2	2	2
IBBME	Assistant Prof	1	1	3	4	5	4	3	3	3	6
	Associate Prof	0	0	0	0	0	1	3	3	3	3
	Professors	0	0	0	0	0	0	0	0	1	1
	Lecturers	0	0	0	0	0	0	0	0	0	0
ECP & EngSci	Lecturers	-	-	-	-	-	-	-	5	5	6
Total	183	187	203	212	221	227	220	225	226	231	

Note: Number of lecturers from ECP and EngSci is unavailable prior to 2006–2007. Please see Appendix for further analysis of academic staff.

Figure 2.4
Licensure of Faculty by Professional Engineers Ontario
2005–2009



This past year Professional Engineers of Ontario (PEO) introduced a Specific Scope License as an alternative to the PEng for faculty without an undergraduate degree in Engineering, but who are active in research and teaching Engineering Science and Engineering Design courses. We have worked with PEO to facilitate applications by our faculty for both the PEng and Specific Scope Licenses with great success. In Spring 2009, 54 faculty members wrote the Professional Practice Examination which will allow them to qualify for either license. This allows us to have more than 92% of our faculty licensed in the near future.

Note: Percentage Potential is comprised of all licensed faculty, plus those who have applied for a license (PEng or Specific Scope).